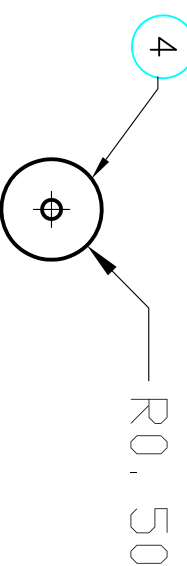
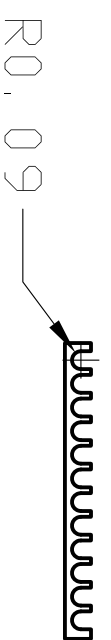
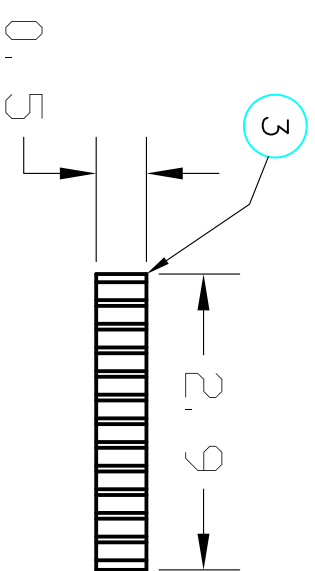
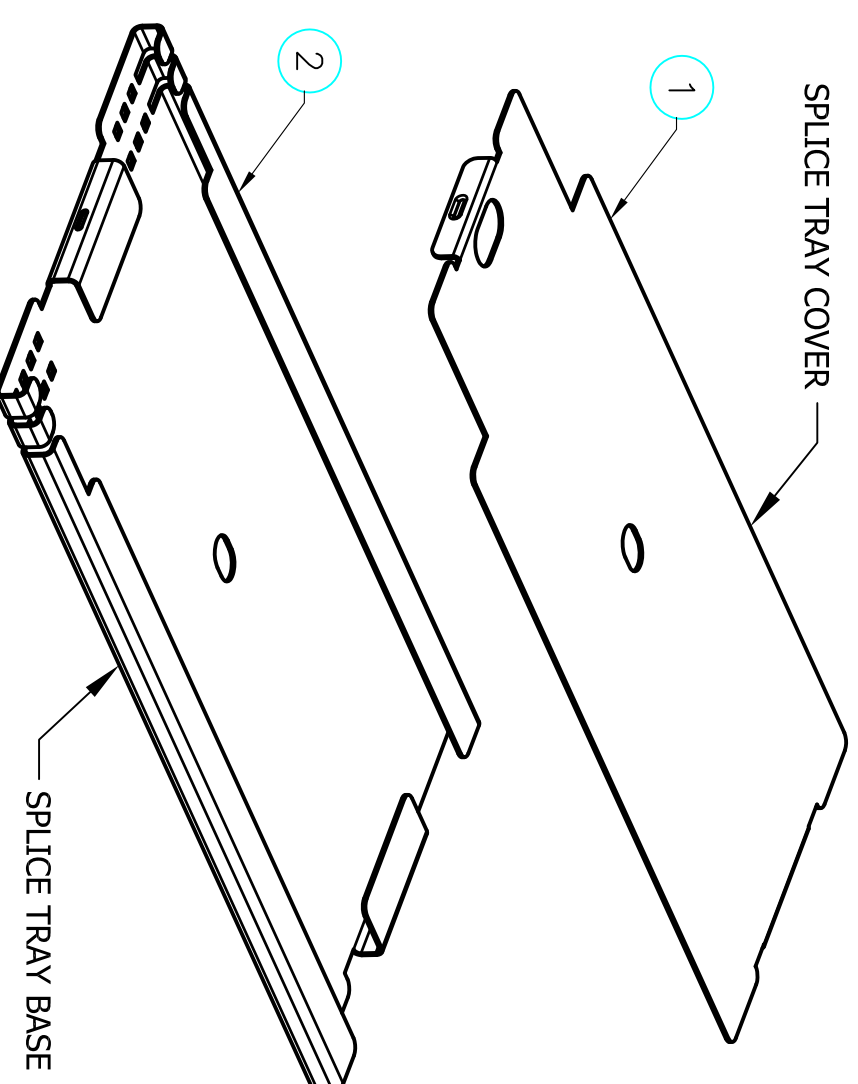
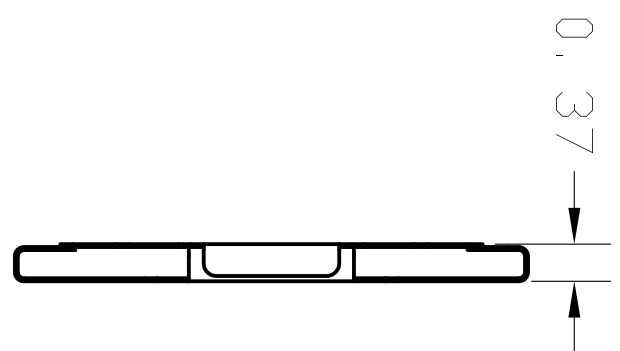
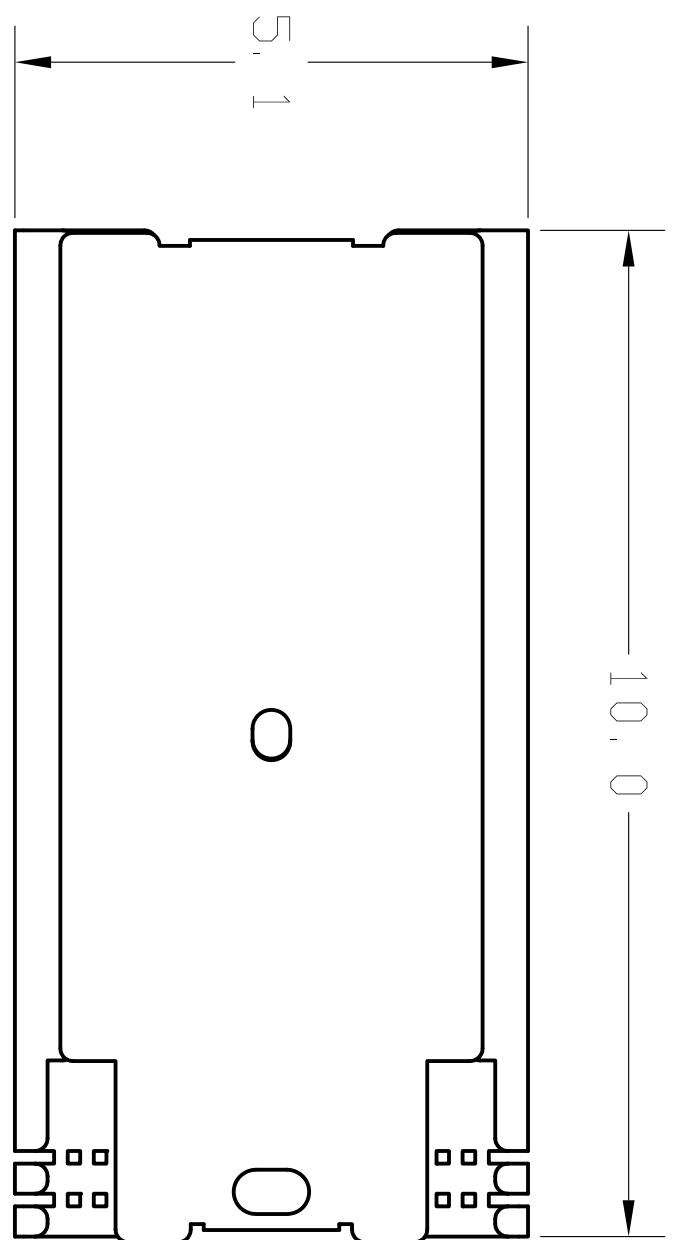


ITEM NO.	DESCRIPTION	QTY.
1	COVER	1
2	BASE	1
3	RIBBON FUSION SPLICE HOLDER	2
4	FOAM WASHER	1
5	4" ZIP TIES (NOT SHOWN)	8

CATALOG NUMBER	DESCRIPTION
STRAY12RFSDP	RIBBON FUSION SPLICE TRAY, CONFIGURABLE



- NOTES:
1. TRAY MATERIAL IS .030" THICK ALUMINUM WITH A CLEAR ANODIZE COATING.
 2. TRAY INCLUDES RIBBON FUSION SPLICE HOLDERS. THE SPLICE HOLDERS ARE NOT PRE-INSTALLED.
 3. SPLICE HOLDERS COMPATIBLE WITH MOST SPLICE SLEEVES.
 4. SPECIFICATIONS SUBJECT TO CHANGE WITHOUT NOTICE.

REV.	ECN	DATE	DESCRIPTION	CHG BY	APPD BY
1	17886	4/2/12	INITIAL RELEASE	CG	

Created on AUTOCAD

DIMENSIONING AND TOLERANCE PER
ANSI Y14.5M-1982
UNLESS OTHERWISE SPECIFIED,
DIMENSIONS ARE IN INCHES (MM).

TOLERANCES
.X = ±.03 (.8)
.XX = ±.02 (.4)
.XXX = ±.010 (.25)
ANGLE TOL ±1°

IN ACCEPTING OUR DRAWINGS,
BLUEPRINTS, OR SUPPORTING
DOCUMENTATION FOR QUOTATION
OR OTHER PURPOSES, YOU AGREE
NOT TO DISCLOSE TO OTHERS
THE IDEAS, INFORMATION, OR
DESIGNS SHOWN HEREIN, AND
THAT YOU WILL MAKE NO USE
OF SAME WITHOUT PERMISSION

PROJECT REFERENCE:
020-12

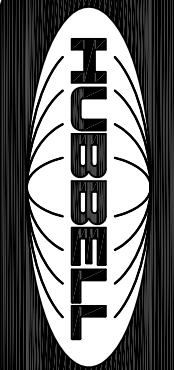
MATERIAL:
SEE NOTES

DRAWN BY:
C. GRIBBLE 4/2/12

CHECKED BY:

APPROVED BY:

TITLE:
FIBER OPTIC SPLICE TRAY, RIBBON FUSION



Hubbell Premise Wiring
HUBBELL INCORPORATED (Delaware)
14 Lord's Hill Road, Stonington, Connecticut 06378

SIZE: **C** DRAWING NO.: **HWS13036C** REV.: **1**

SCALE: **NTS** SHEET **1** OF **1**